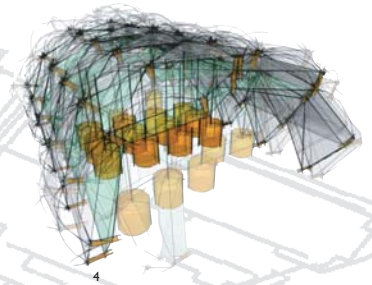
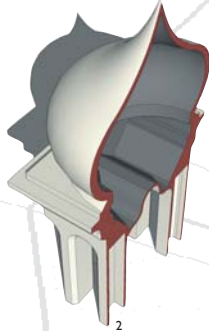
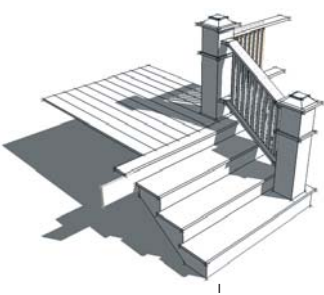


# SketchUp™

www.sketchup.com

LOVE SKETCHING  
ON  
NAPKINS?

## Moving the Design Beyond the Napkin!



Award winning SketchUp presents a completely new way to design in 3D on the computer. Developed for the conceptual stages of design, this powerful, easy-to-learn software allows for quick and easy 3D form creation, modification and communication. Sophisticated enough for complex projects yet accessible for beginners, SketchUp allows everyone from Architects to hobbyists to design in 3D. And it plays well with others! SketchUp exchanges data with all standard CAD, 3D modeling, image editing, and illustration applications.

Design professionals can now use SketchUp to develop their design ideas from initial concepts all the way through detailing and documentation without learning advanced modeling techniques and complicated set of commands. SketchUp 3.0 combines a compact yet robust tool-set with an intelligent guidance system that streamlines the 3D drawing process. Designers already hooked on SketchUp's amazing power, ease of use and resource efficiency will truly appreciate SketchUp 3.0 with enhancements that include:

- Dimensioning and Annotation
- Improved Arc, Circle and Polygon manipulation
- Curved Faces and Soft Edges
- Material Transparency
- Animation and VRML Export
- Vector Output

Are you ready to move beyond the Napkin?

"makes the complicated easy..."

"The first program that I believe truly adds productivity to the creative process itself"

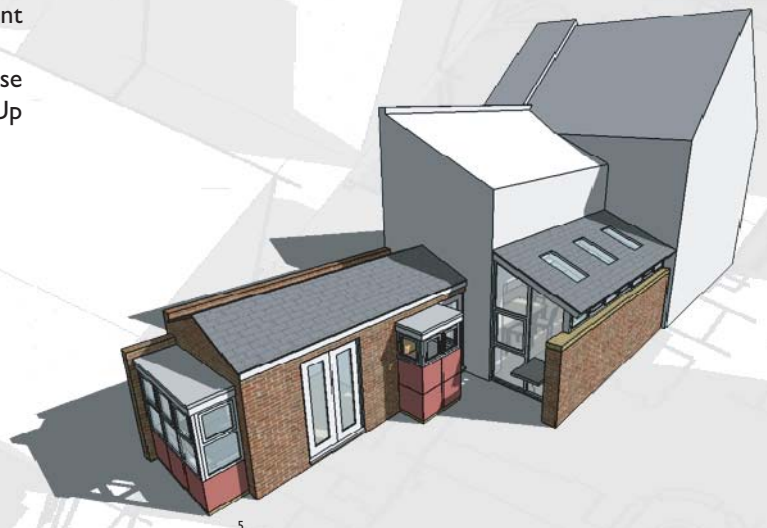
H.Edward Goldberg, AIA

"SketchUp is hands down the most effective, inexpensive tool available to architects, designers and enthusiasts who are interested in seeing their ideas in hours, not days or weeks."

Johnathan Wood, Rice Fergus Architects

"The program is almost as easy to use as pencil and paper"

Editor, Computer Graphics World



2019 10th Street  
Boulder, Colorado 80302  
303.245.0086 tel.  
303.245.8562 fax.

@Last  
SOFTWARE®

## What's in SketchUp™

SketchUp contains a unique interface that allows 3D forms to be created, viewed and modified quickly and easily. The core of its simplicity is an interface that allows the user to simply draw the edges of the desired model in 3D space, just like they would using pencil and paper. Intelligent inferencing capabilities automatically determine the nature of the lines and "fills" shapes to create 3D geometry.

### Arc's, Circles and Polygons

Instead of immediately breaking up arcs and circles into line segments, SketchUp 3.0 maintains a connective link between segments to provide curved shape entities that allows faster selection and further editing in useful ways after they are drawn.

### TourGuide™ Technology

TourGuide Technology allows the user to quickly create animations of their models based on specific views. These animated slide shows or fly-throughs are extremely useful for client presentations, and shadow studies. Export them out in either AVI or MOV format for inclusion into Multimedia presentations.

### Patent Pending Push/Pull

Push/Pull, as the name implies, enables the user to simply click on a shape and push or pull it to create 3D geometry. Much more than just an extrude tool, it allows the user to quickly create complex 3D geometry by pulling or pushing 2D shapes and edges.

### Curved Faces and Soft Edges

To better represent smooth curved forms, Push/Pulled shapes containing curved faces and edges can be edited whilst still maintaining hidden internal edges and correctly displayed profile edges as the viewpoint changes.

### Speedy Import and Export of DWG and DXF Files

Import a DWG site plan as a starting point for design. Then export to DWG to create construction documents from 3D models

created in SketchUp. Fantastic 3D complement to AutoCAD, ACAD LT or other CAD programs.

### Self-Casting Shadows and Shadow Tool Bar

Interactive, self-casting shadows for generating imagery of greater depth as well as exploring solar performance.

### Advanced Rendering Features

Includes Profile and Extension lines for a real "sketched" look.

### Color and Material Exploration

Quickly experiment with color and texture interactively and directly on your Model. Designers who often work with color and material compositions will attest that the relationships between color, texture, form, and light are subtle and cannot simply be inferred from monochromatic models and paint samples.

### Material Transparency

Variable transparency can now be applied to materials applied to faces or layer colours allows you to more easily represent glass, liquid and abstract conceptual diagrams.

### 2D Hidden-Line and Filled Vector (HLV) Output

Output 2D vector perspectives or dimensionally accurate paraline drawings directly to your CAD program of choice or vector-based illustration software for quick integration into construction or presentation documents.

### In-Place Group and Component Editing

Edit all instances of a component in your scene simultaneously and interactively, without having to explode or redefine them. Not only does this vastly streamline the process of working with components, but it also allows you to better visualize aspects such as repetition, rhythm, kit-of-parts systems, and comparative scale within your design.

### Multi-Copy™ (Linear and Radial Arrays)

Quickly explore various types of linear and radial arrays. With Multi-Copy, you can quickly repeat a copy or rotate a copy any number of times along any direction or angle. Also subdivide between two copies to quickly "fill" geometry in a number of equal spacing.

### Groups

Quickly organize geometry for convenient selection as well as keeping geometry "safe" from other lines and faces in your model. Even make groups of groups, providing both complex relationship management and double-click access to any geometry you want to edit at any one time.

### Dimensions and Annotations

Quickly place simple dimensions and text notes directly in your SketchUp model allowing you to use SketchUp in many more parts of the design process, resulting in a more efficient work flow and more effective visual communication.

### Key features

- Elegant User interface
- Fast DWG/DXF import and export
- TourGuide<sup>a</sup> Technology
- Real-time shadow casting
- Profile, extension and "sketched" jitter lines
- Interactive material exploration
- In-place Component editing
- Cross-platform functionality
- Dimensioning and Annotation
- Curved Faces and Smooth Edges
- Quicktime MOV and Windows AVI export
- EPS, PDF and VRML export



# Call your local Distributor for a free Demo CD

#### SketchUp™ System Requirements

##### Windows®

- Microsoft Windows 98, NT4.0 w/SP3, 2000, XP
- 400 MHz processor (600 MHz recommended)
- 64 MB RAM (128 MB recommended)
- 20 MB free disk space for minimum installation
- 3-button, scroll-wheel mouse
- Internet Explorer 6.0 or later
- 100% compliant OpenGL video card

##### Mac OS X:

- Mac OS X 10.2 or higher
- 400 MHz or faster PowerPC G4
- 128 MB RAM (256 MB RAM recommended)
- 20 MB free disk space for minimum installation
- 100% compliant OpenGL video card
- 3-button, scroll-wheel mouse

Distributed by:



## 020 8358 6668

